

## Pistol Grip installation procedure

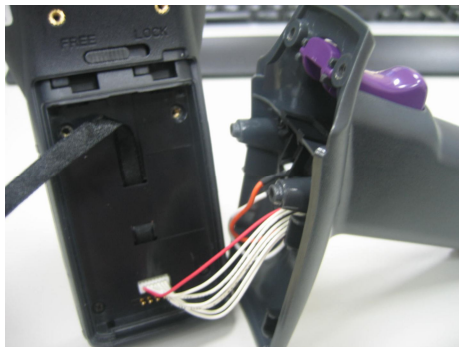


pic01



pic02

1. Move battery door latch from LOCK to FREE.
2. Remove battery cover.
3. Remove two screws which under battery cover (like pic02).



pic03



pic04



pic05

4. Connect power cable of Gun grip with PT60 (like pic03).
5. Combine Gun grip with PT60 (like pic04).
6. Lock up four screws.