



BF48 SERIES

BF48

Flash turbo, Heavy duty & Elegant

BF481 Long Range CCD

BF482 Laser scanner

User's Manual **Scanner Settings**



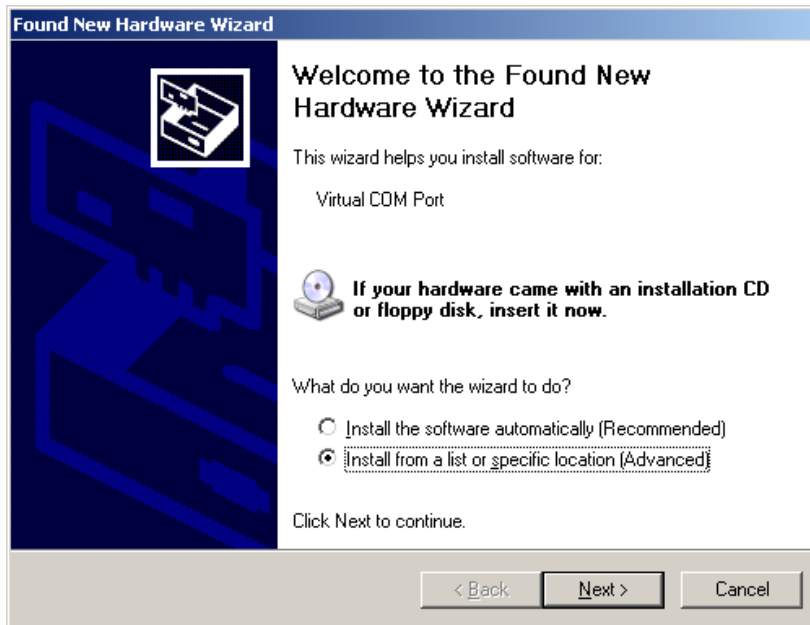
ISP Driver Installation Guide

[This ISP installation guide helps the user to install the ISP driver to their PC, When user wants to configure the barcode scanner by software, User must install this driver, and scan "Enter" and "ISP" barcode to enter configuration mode.]

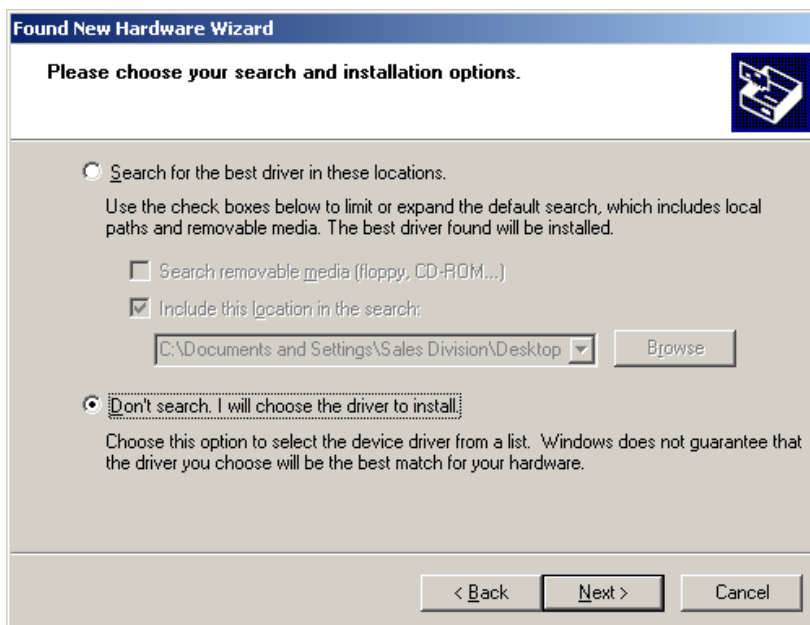
Connect to computer, and scan the below barcode to switch to ISP setting mode.

ENTER	
ISP	

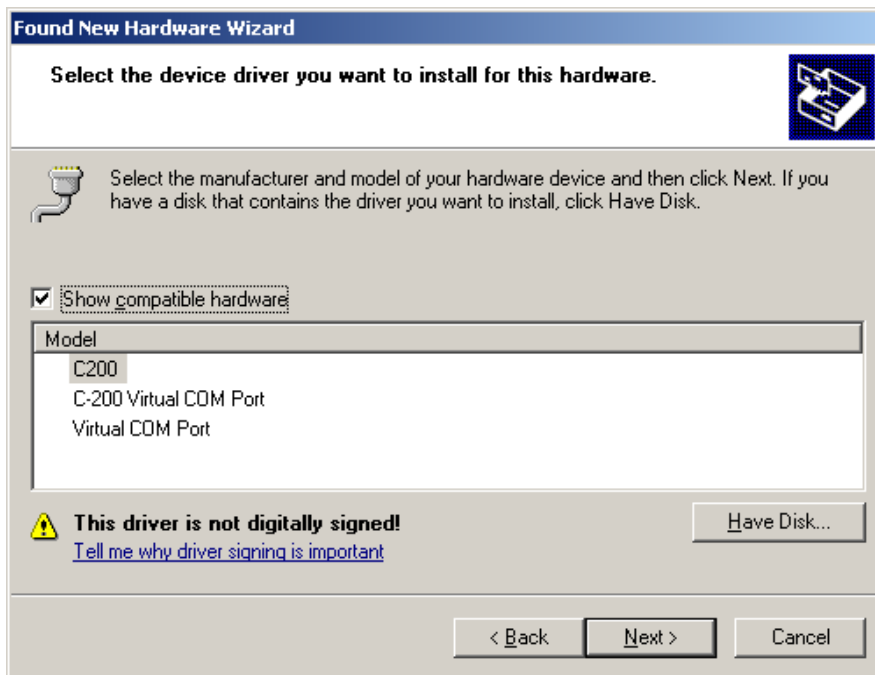
1. After switching to ISP setting mode. The screen will appear as below.



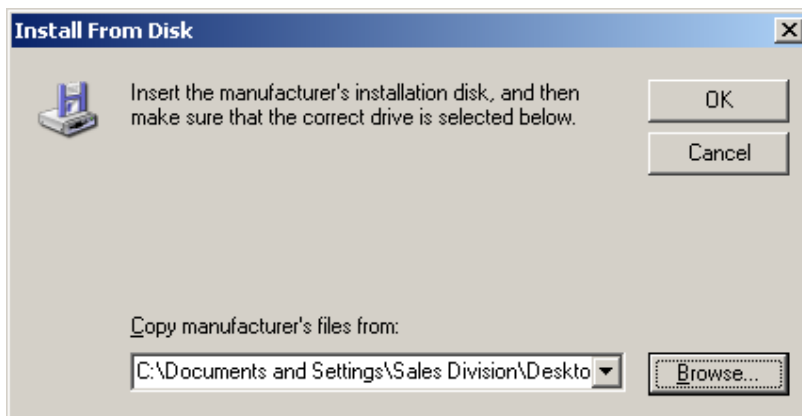
2. Select “Install from a list or specific location (Advanced)” option. The screen will appear as below.



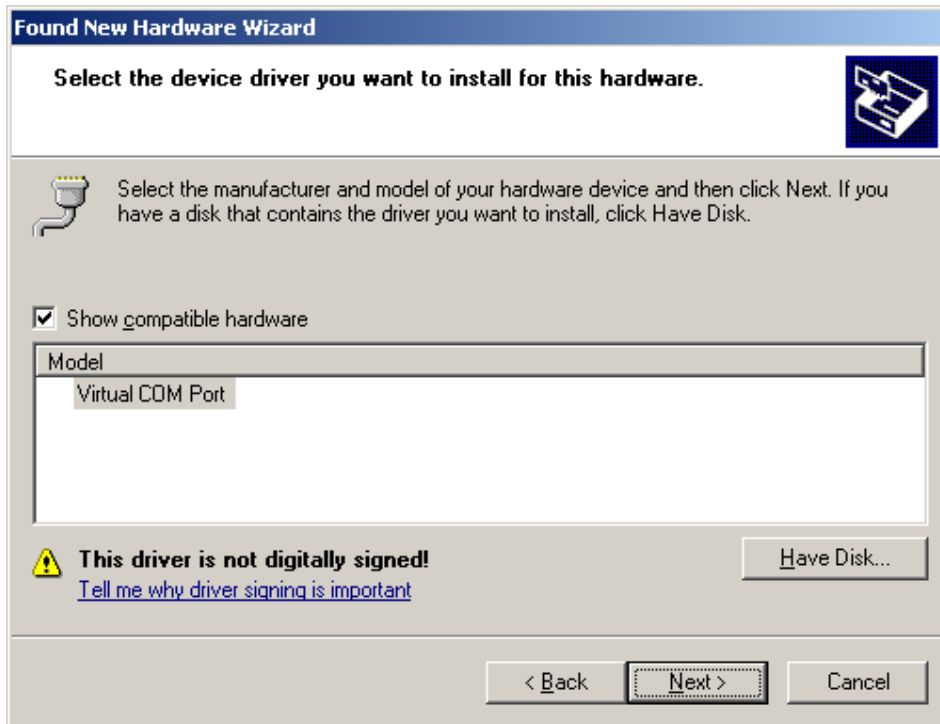
3. Select “**Don’t Search. I will choose the driver to install**” option, and select “**Next >**” for next step. The screen will appear as below.



Select “**Have disk**” option, the screen will appear as below.

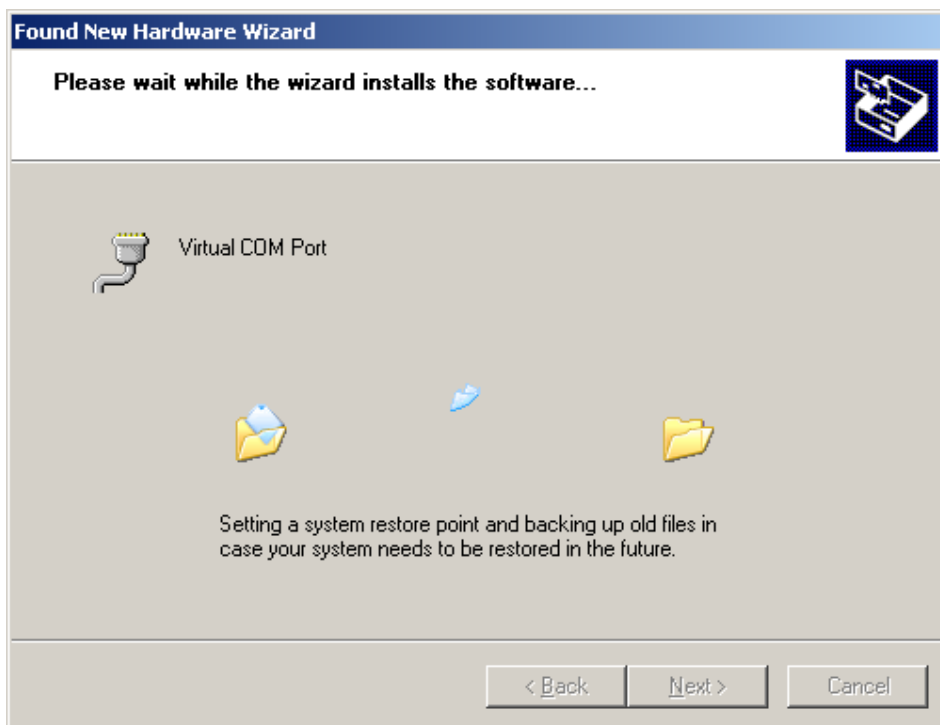


Select “**Browse**” to search the driver file (“C0801.inf”) under the Driver directory. Select “**OK**” the screen will appear as below.

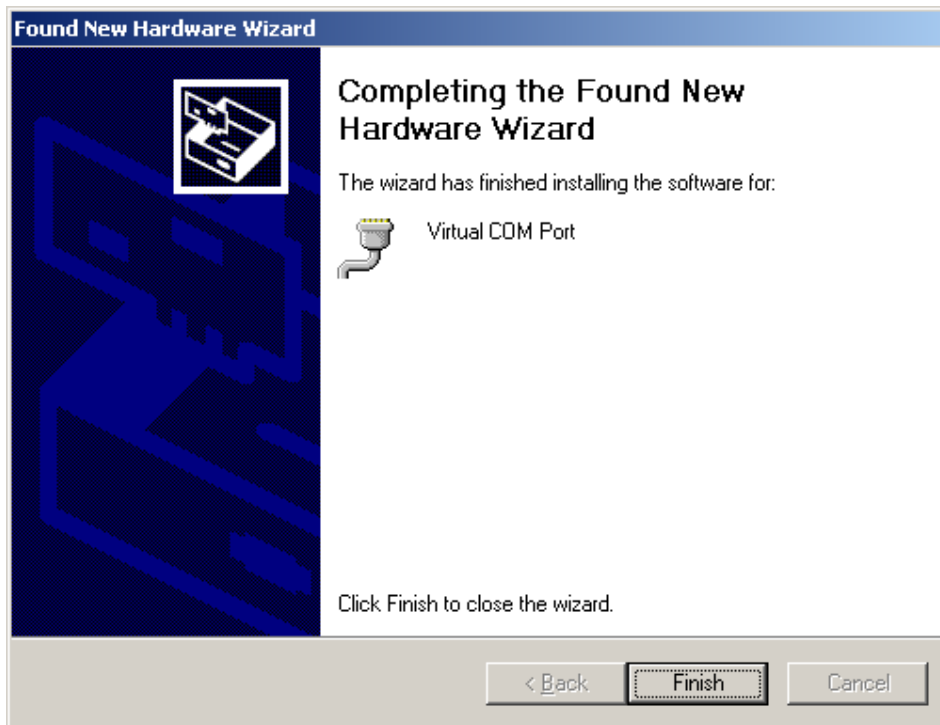


In this screen, select “**Next >**” to proceed the next step.

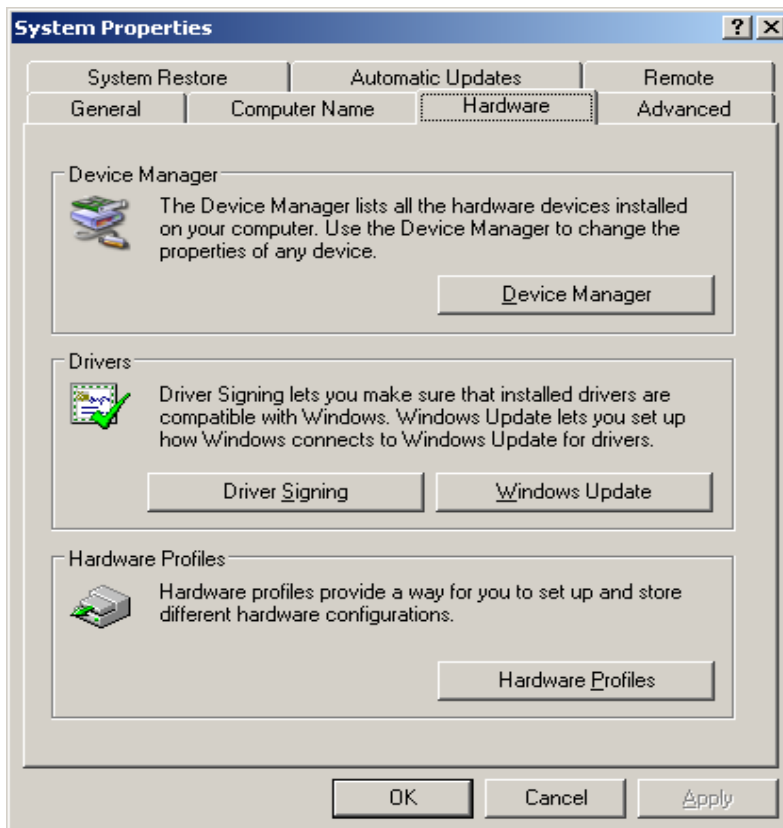
4. Driver installation will begin



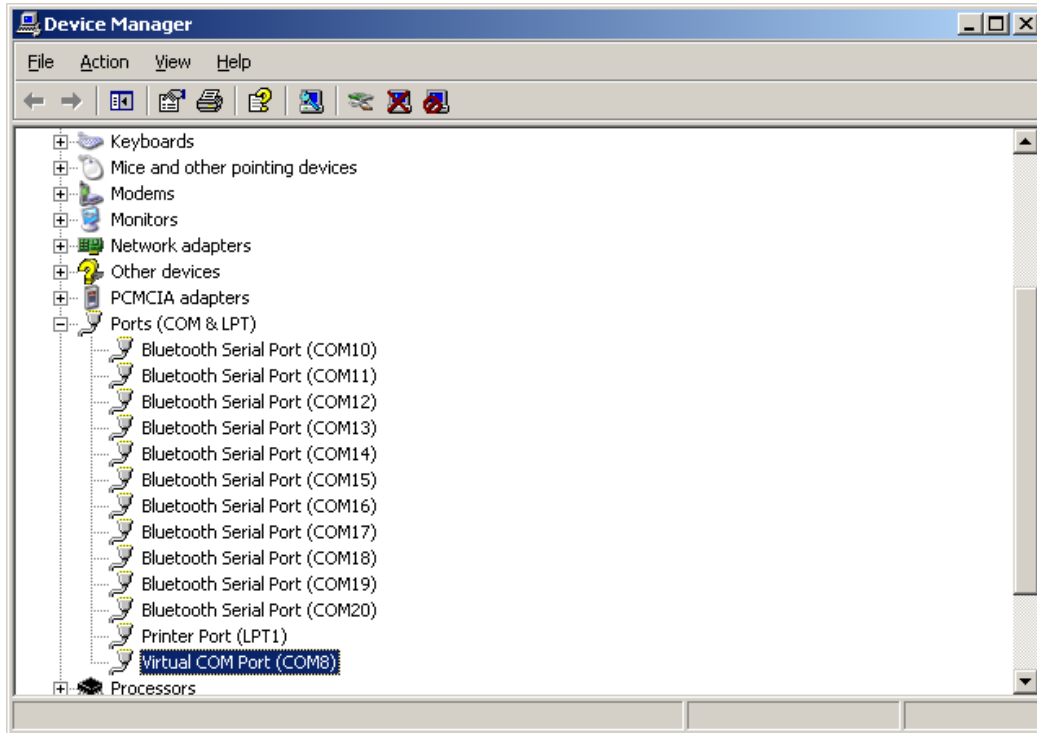
5. Driver completed. The screen will appear as below.



6. Select Property by right click the “My computer” icon. The screen will display **System Properties**.



7. Click “Hardware” tab and select “Device Manager” The screen will appear as below.



In this screen, the user can see the COM port is in “COM8” under ISP mode.